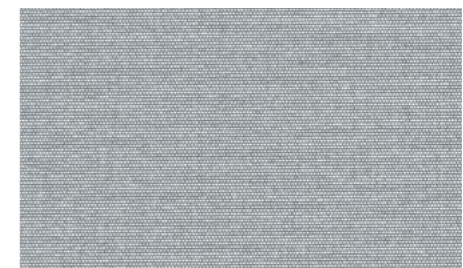
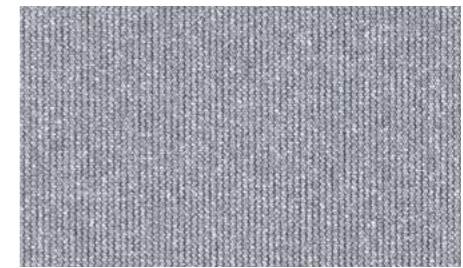
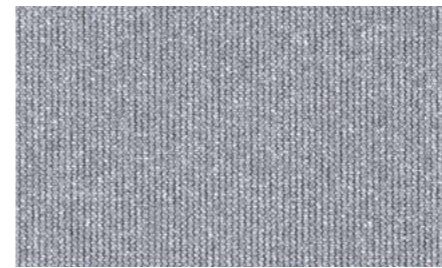
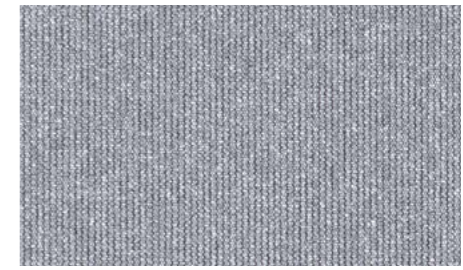
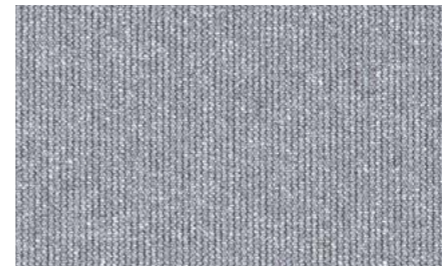


- 816 Sky
- 812 Breeze
- 849 Sølv
- 878 Titano
- 890 Unlit

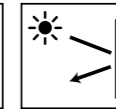
Nr. 122039000002002



kvadrat shade

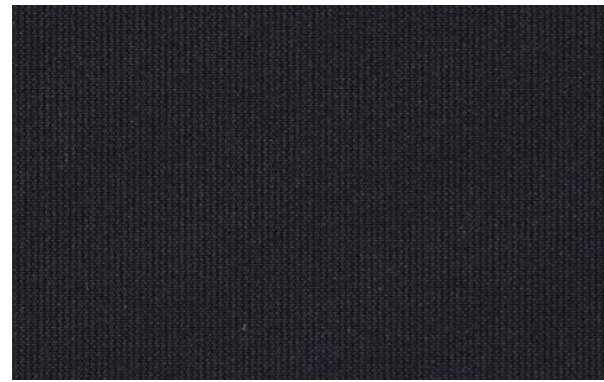


Management System
ISO 9001:2015
ISO 14001:2015
www.tuv.com
ID: 9186621700

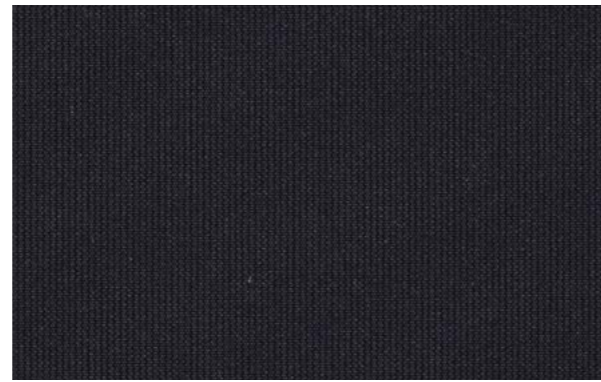


www.kvadratshade.nl

Transparencies



816    23% OF



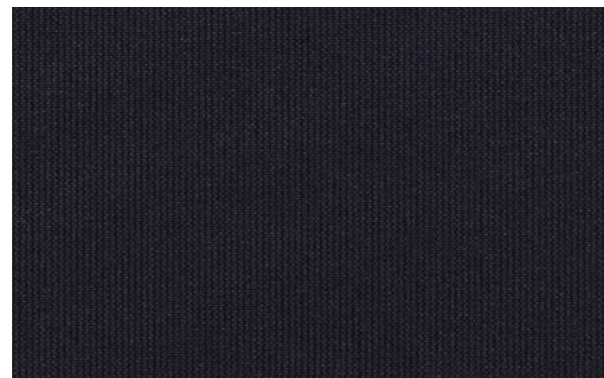
812   5% OF



849    2% OF

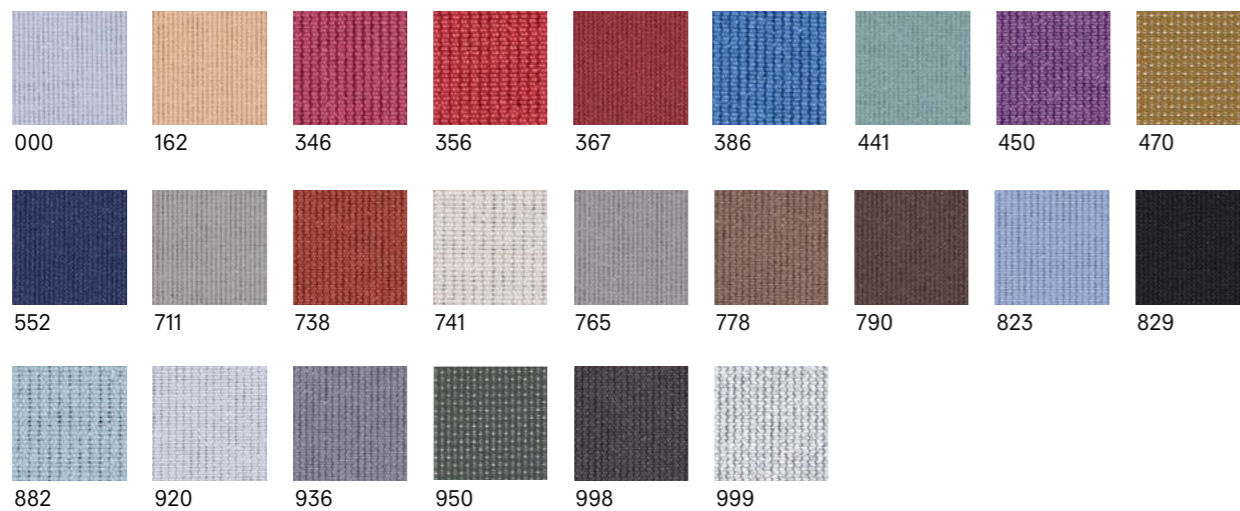


878    0% OF



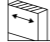
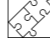







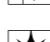
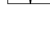




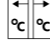
890   0% OF Available in six colours See underlined colour numbers

Colours



Specifications

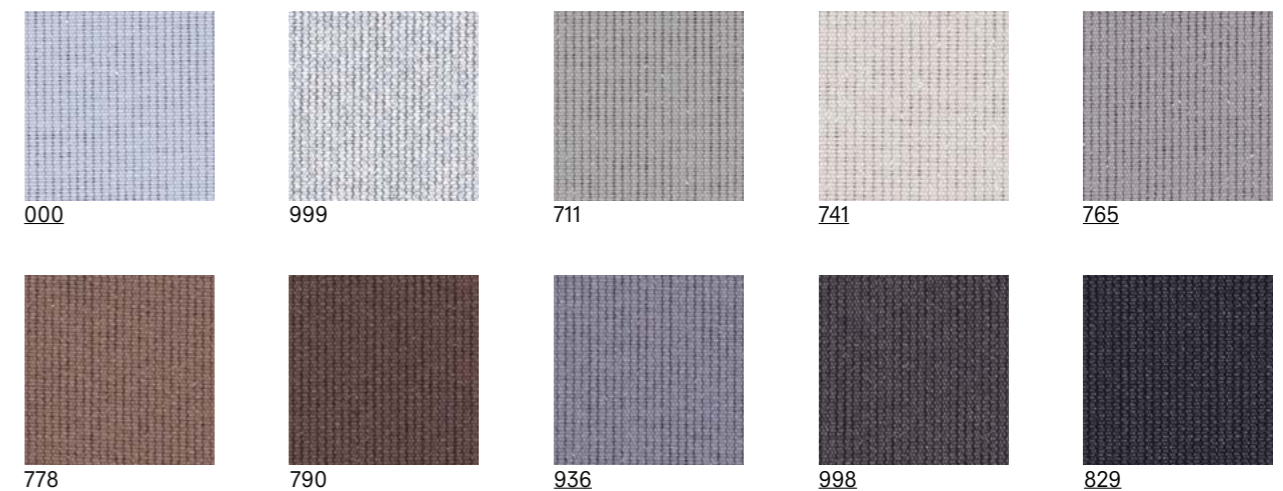
	816	812	849	878	890
 Thickness (mm)	0.20	0.19	0.26	0.22	0.31
 Weight (g/m ²)	73	94	125	140	315
 Width (cm)	240	240	240	240	295
 Composition	Trevira CS	Trevira CS	Trevira CS	Trevira CS	Polyester
 Flame retardant standards	DIN 4102 B1, BS 5867 part 2 type B, NFPA 701, AS/NZS 1530.3 (0-0-0-2)				
 Environmental standards	OEKO-TEX Standard 100 Class IV, HPD 2.1, RoHS2, REACH, GreenGuard (LEED), Greenguard Gold, PVC free, Formaldehyde free, Halogen free, Phthalate free, antimicrobials free				
 Solar reflectance outside	44%	62%	65%	68%	70%
 UV transmission	27%	7%	4%	1%	0%
 Light transmission	29%	9%	5%	3%	0%
 Openness factor	23%	5%	2%	0%	0%
 IR emissivity (metal side)	0.51	0.35	0.29	0.27	0.29
 Visual contact according to EN 14501:2005*	4	2	2	0	0
 Glare control rating according to EN 14501:2005*	0	3	3	4	4

	Solar Control double glass (Glazing D EN14501:2005)	Glazing performance	816	812	849	878	890	Performance improvement
 Light Transmission** LT value		60%	20%	7%	3%	2%	0%	67-100%
 Solar heat gain** g-value / SHGC		32%	23%	18%	18%	17%	16%	28-50%
 Insulation** U-value (W/m ² K)		1.1	0.9	0.8	0.8	0.8	0.8	18-27%

* All results are based on the measured colour 829 black ** All results are based on the measured colour 000 white

Optical properties are measured according to EN 14500, ISO 9050, ASTM C1371 & EN 410. For more information about technical data, energy savings and worldwide distribution, refer to www.kvadratshade.nl. Disclaimer: The technical data is based on average data and is subject to production tolerances. Subject to misprints, errors and technical modifications. All technical details per colour available upon request.

Customer favourites



The colours shown may vary from the supplied fabric due to batch variation in the production process. Please visit www.kvadratshade.nl to order samples of your choice. 890 Unlit is available in the underlined colour numbers.